

**LEGAL
REMINDER**

"Temporary work at height must be undertaken using a work plan designed, installed, or equipped to ensure the safety of workers. Workers must be protected by means of a suitable fall prevention system."

Extract from decree 2004-924 of 1 September 2004 relating to the use of working equipment provided for temporary work at height.

**CERTIFICATE
OF
CONFORMITY**

VERTILINE is certified to standard EN 353-1. This equipment may be used in high working areas.



CERTIFICATE OF CONFORMITY
N° 0082/588/160/11/00/0336

Travelling,
locking
carriage.

Our certificates of conformity are available on request.

**PRICE
REQUEST
FORM**

A VERTIC technical-commercial specialist can be consulted in advance of your on site projects.

You can also send us your request directly by completing the relevant enquiry form, available on our web site.

We will then send you a personalised quotation.

DOWNLOAD YOUR QUOTATION REQUEST FORM FROM OUR WEB SITE **WWW.VERTIC.FR**



VERTIC

TEL. +33(0)4 76 13 12 15
FAX. +33(0)4 76 13 12 16
E-MAIL vertic@vertic.fr

691 CHEMIN DES FONTAINES
PARC TECHNOLOGIQUE
38190 BERNIN - FRANCE

WWW.VERTIC.FR

**CABLE
SYSTEM**

VERTILINE®
COMPLIES WITH STANDARD EN 353-1



VERTILINE®
COMPLIES WITH EN 353-1

VERTICAL SAFETY SYSTEM

A VERTICAL BELAYING

VERTILINE TECHNOLOGY PERMITS WORKING IN COMPLETE SAFETY ON A WIDE RANGE OF VERTICAL STRUCTURES (LADDERS, PYLONS, WIND TURBINES, ROOF ACCESS, ETC.).

EASE OF USE

AUTOMATIC ENGAGEMENT OF THE CARRIAGE WITH THE CABLE, EVEN WHEN WEARING GLOVES.

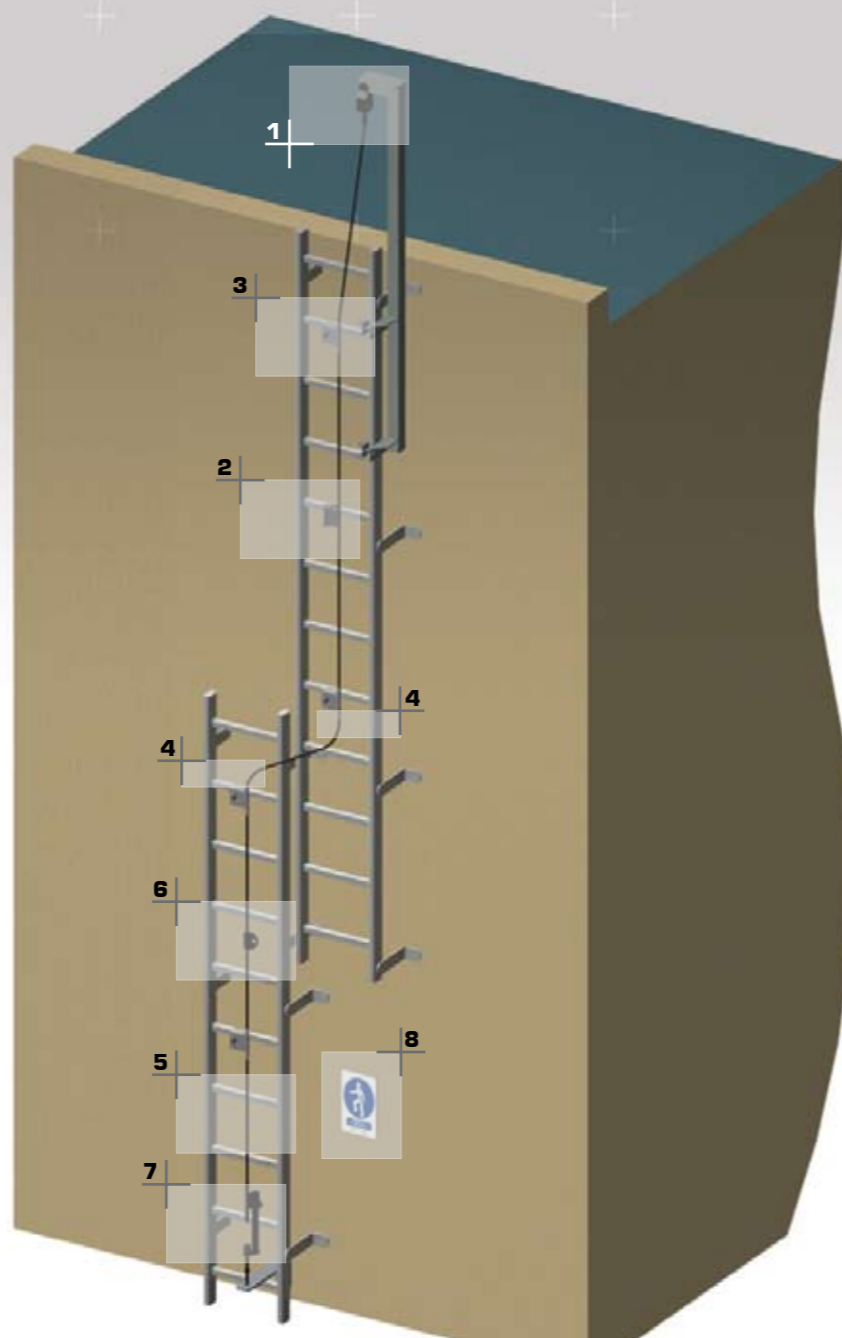
NO FALSE LOCKING OF THE CARRIAGE

SPEED OF ADVANCE CONTROLLED BY THE OPERATOR.

CONTINUOUS GUIDANCE OF THE CABLE

THE OPERATOR DOES NOT HAVE TO REPLACE THE CABLE IN THE GUIDE SUPPORTS AFTER USE.

CERTIFICATION CERTIFIED FOR 3 SIMULTANEOUS USERS.



TRAVELLING, LOCKING CARRIAGE

PATENTED VERTIC



FREEDOM OF MOVEMENT

The VERTIC travelling, locking carriage allows the operator total freedom of movement.

The carriage does not cause false locking, either when climbing or descending.

Built-in energy absorption mechanism. Certification carried out without additional strap absorber, as this has a limited life.

Upper part

Ref. EVH2

Upper end with point crimping. Its elastomer component contributes to energy absorption.



Travelling, locking carriage

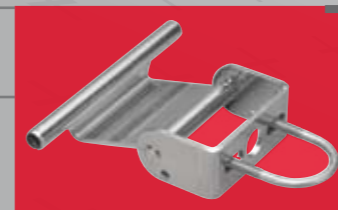
Ref. CMB

Can be attached at any point of the cable. Supplied with karabiner.

Mobile intermediate piece

Ref. IMV

Gives freedom of movement when travelling. 3 sizes of stirrup available : 34mm ; 29mm ; 24mm



Lower part

Ref. EVB3

Pretensions the cable and enables rapid attachment of the carriage at the bottom.

Fixed intermediate piece

Ref. IFV

Permits the carriage to pass easily. 3 sizes of clevis available: 34mm ; 29mm ; 24mm



Safety sign and label

Ref. PS

Comprises 2 parts:
- Compulsory EPI panel.
- Lifeline identification label.

Cable-locking end piece

Ref. BAG 01
Ref. ESC8

Permits curves and direction changes. Available in removable or crimped versions.



Cable

Ref. CI8

8mm - 7x7 stainless steel cable. VERTIC Bolduc built into the core of the cable for better routing. Certification also valid with Ø 8 dia. single strand cable



VERTILINE® INTERFACES



Ladder fixings

Ref. SHL3

The same support is adjustable for top or bottom fixing, depending on the structure.



Tubular mast fixings

Ø 27 to 42 mm Ref. SLH2
Ø 60 to 140 mm Ref. SLH1



Standard parts can be used as top or bottom parts. Two adjustable models to suit the diameter of the mast.



Concrete wall fixings

Ref. T
Ref. SBP

- **T-piece:** Support for the upper part for fixing on the facade or on the under surface of the concrete beam.



- **SBP:** Support for the lower part for fixing on the facade or on a special interface.



Extension piece

Ref. PHR

Attaches to the top of the ladder. Facilitates passage of the ladder operator onto the roof.

SIMPLE CONNECTION

- The carriage can be attached to the cable at any point.
- Direct connection to the operator's chest without an energy absorber on the harness.

VISIBLE SAFETY

- Fitted with a tension checking device at the bottom.
- Energy absorber at the top, reusable after loading.

EASE OF INSTALLATION AND USE

Cable storage not managed by the operator. The cable is captive in the intermediate parts (with automatic passing of the carriage).

LONGEVITY OF THE SYSTEM

Made entirely from stainless steel. 8mm stainless steel cable (7X7 or single core).