

LEGAL REMINDER

"High falls can be prevented by built-in or securely attached, rigid handrails of suitable strength. When a group protection system cannot be implemented, operators must be protected by a suitable anti-fall system."

Extract from decree 2004-924 of 1 September 2004 relating to the use of working equipment provided for temporary work at height.

CERTIFICATE OF CONFORMITY

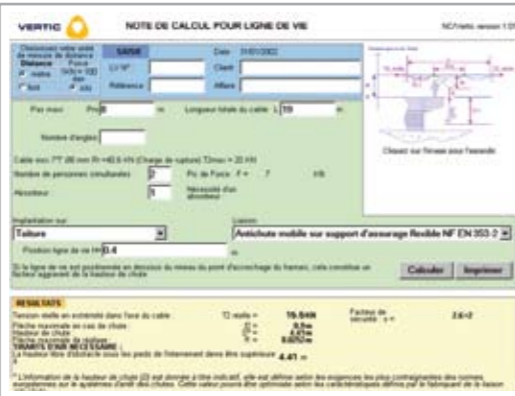
CONSTRULINE is certified to standard EN 795, Class C. This equipment may be used in high working areas.



CERTIFICATE OF CONFORMITY
N° 20271425

Our certificates of conformity are available on request.

CALCULATION OF FORCES



VERTIC has developed a special program to calculate the forces applied to the host structure and the fall heights.

Available at:
www.vertic.fr

PRICE REQUEST FORM



A VERTIC technical-commercial specialist can be consulted in advance of your on site projects.

You can also send us your request directly by completing the relevant enquiry form, available on our web site.

We will then send you a personalised quotation.



VERTIC

TEL. +33(0)4 76 13 12 15
FAX. +33(0)4 76 13 12 16
E-MAIL vertic@vertic.fr

691 CHEMIN DES FONTAINES
PARC TECHNOLOGIQUE
38190 BERNIN - FRANCE

WWW.VERTIC.FR



CONSTRULINE®
COMPLIES WITH EN 795 Class C

CABLE SYSTEM



CONSTRULINE®
COMPLIES WITH EN 795 Class C

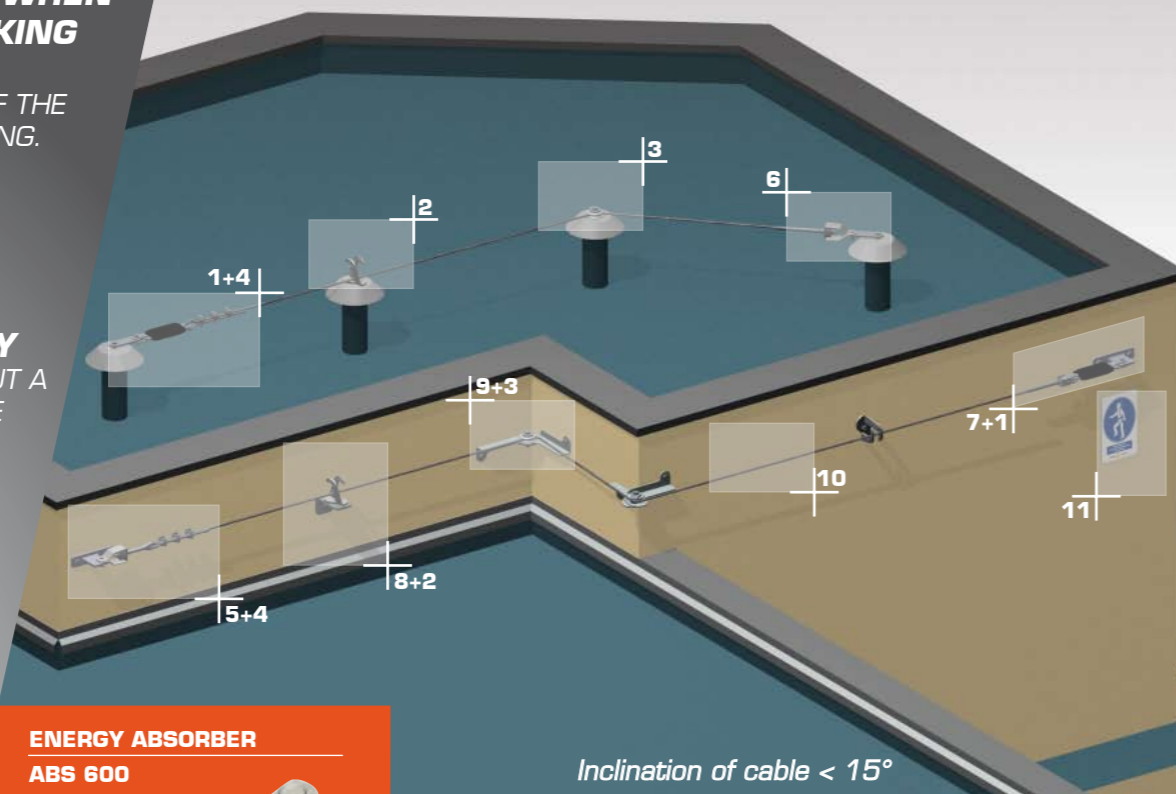
SAFETY WITH SIMPLICITY

CONSTRULINE IS IDEAL WHEN THE OPERATOR IS WORKING CLOSE TO THE LINE

IT PERMITS SIMPLE PASSING OF THE SUPPORTS WITHOUT UNCLIPPING.

MINIMUM EQUIPMENT WITH MAXIMUM SAFETY

CONSTRULINE IS USED WITHOUT A CARRIAGE AND WITH A SIMPLE KARABINER.



ENERGY ABSORBER
ABS 600



PATENTED VERTIC

CONTROLLING THE FORCES

A fall on a life line generates a force at the end of the cable that can exceed 2 tonnes. To reduce the load applied to the building, VERTIC has developed the particularly innovative ABS600 energy absorber which reduces this force to only 600kg.

Inclination of cable < 15°



The distance between the **CONSTRULINE** life line supports is certified up to 15m for 2 persons.

ABILITY TO USE VARIOUS ROUTES

Owing to the flexibility of the cable and the intermediate supports and corners that guide the cable for the whole of its route.

TENSION INDICATOR

A visual indicator permits optimum adjustment of the cable tension.

EASE OF INSTALLATION

The cable terminations can be crimped in a press or can be attached on site without special tools.

RESISTANCE TO CORROSION

Due to the use of stainless steel components.

Energy absorber
Ref. ABS600

Fitted at the end of the life line, it reduces the forces to 600 daN.



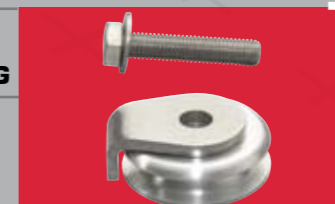
Intermediate piece
Ref. BA.INT

Spaced at 15m maximum, the intermediate pieces include a visual fall indicator.



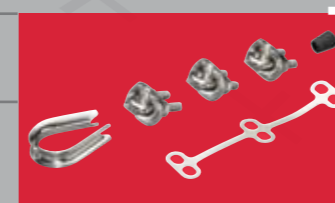
Corner piece
Ref. BA.ANG

For use with variable angles. Can be fitted on facades using the facade mounting (**BA.ANGSA**).



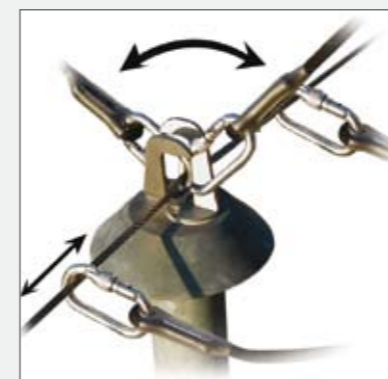
Manual end piece
Ref. BA.EXT

Fitted to the end of the cable manually without special tools.



Eyelet tensioner
Ref. BA.TSL2
Ref. BA.TSL2-50

Associated with manual end piece (**BA.EXT**) and can be fitted without special tools.
BA.TSL2: Tension up to 80kg.
BA.TSL2-50: Tension up to 50kg in combination with **ALTIFIX**.



SAFETY WITHOUT UNCLIPPING

The operator, clipped to the cable, can move around without having to unclip himself when passing the intermediate supports. The use of a simple spring clip enables the operator to work in complete safety close to the life line.

THE SIMPLICITY OF THE COMPONENTS

CONSTRULINE is particularly economical and attractive for making roofs safe.

Crimped tensioner
Ref. BA.TSL3
Ref. BA.TSL3-50

Cable crimped at points.
BA.TSL3: Tension up to 80kg.
BA.TSL3-50: Tension up to 50kg in combination with **ALTIFIX**.

Crimped end piece with articulated shackle
Ref. ES-2

Life line end piece with crimping at points.

Bracket
Ref. R.EQG

Supports the intermediate piece on a facade (**BA.INT**).

Facade mounting for corner
Ref. BA.ANGSA

Enables corner piece to be mounted on a projecting or reentrant corner.

Cable
Ref. BA-C18

8mm - 7x19 stainless steel cable. VERTIC Bolduc includes a cable core for better routing.

Safety sign
Ref. PS

Comprises 2 parts:
- Compulsory EPI panel.
- life line identification label.

CONSTRULINE® KIT

Kit ready for installation

CONSTRULINE can be packaged in kit 20 or 35 m long for specific quantities. Please contact us if interested.

