

LEGAL REMINDER

"Temporary work at height must be undertaken using a work plan designed, installed, or equipped to ensure the safety of workers. Workers must be protected by means of a suitable fall prevention system".

Extract from decree 2004-924 of 1 September 2004 relating to the use of working equipment provided for temporary work at height.

CERTIFICATE OF CONFORMITY

ALTIRAIL is certified to standard EN 795, Class D. This equipment may be used in high working areas.



CERTIFICATE OF CONFORMITY
N° 2818796.a

ALTIRAIL



CERTIFICATE OF CONFORMITY
N° 2818796.b

ALTIRAIL
suspended



Our certificates of conformity are available on request.

PRICE REQUEST FORM

A VERTIC technical-commercial specialist can be consulted in advance of your on site projects.

You can also send us your request directly by completing the relevant enquiry form, available on our web site.

We will then send you a personalised quotation.

DOWNLOAD YOUR QUOTATION REQUEST FORM FROM OUR WEB SITE **WWW.VERTIC.FR**



VERTIC

TEL. +33(0)4 76 13 12 15
FAX. +33(0)4 76 13 12 16
E-MAIL vertic@vertic.fr

691 CHEMIN DES FONTAINES
PARC TECHNOLOGIQUE
38190 BERNIN - FRANCE

WWW.VERTIC.FR



RAIL SYSTEM

ALTIRAIL®
COMPLIES WITH EN 795 Class D



Cover photograph credit: PRISME

RIGID ANTI-FALL SYSTEM

ALTIRAIL®
COMPLIES WITH EN 795 Class D

RIGID HORIZONTAL BELAYING SYSTEM

CERTIFIED FOR DISTANCES BETWEEN SUPPORTS OF UP TO 6M AND CAPABLE OF SUPPORTING 6 PERSONS SIMULTANEOUSLY.

IDEALLY SUITED

FOR USE IN HIGH INSTALLATIONS, ON THE UNDER SURFACE OF THE ROOF, OR WHEN THE AIR DRAUGHT IS INCOMPATIBLE WITH A CABLE SYSTEM.

IDEAL FOR WORKING AT A DISTANCE

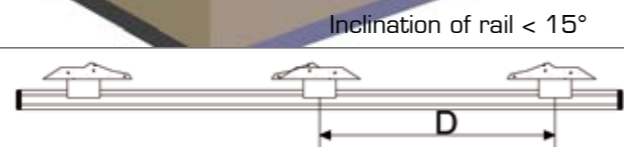
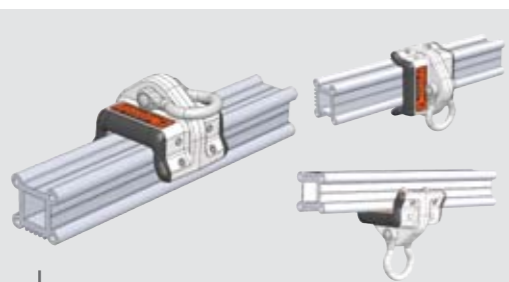
OR IN ASSOCIATION WITH A CONNECTION TO A HIGH WEIGHT (BLOCK).

MOVING CARRIAGE



SIMPLE MOVEMENT

The moving carriage is fitted with multiple rollers to provide perfect movement, whatever position is used.



The distance between the supports of the **ALTIRAIL** is certified up to 6m. However, we recommend, when using the rail only in an anti-fall system, to maintain a distance *D* of 4m between the supports. If the rail is used in suspension, the distance *D* must not exceed 2m between the supports.

VARIOUS ROUTES MAY BE USED

By means of the switch, which enables continuous movement in up to 4 directions.

REDUCED HEIGHT OF FALL

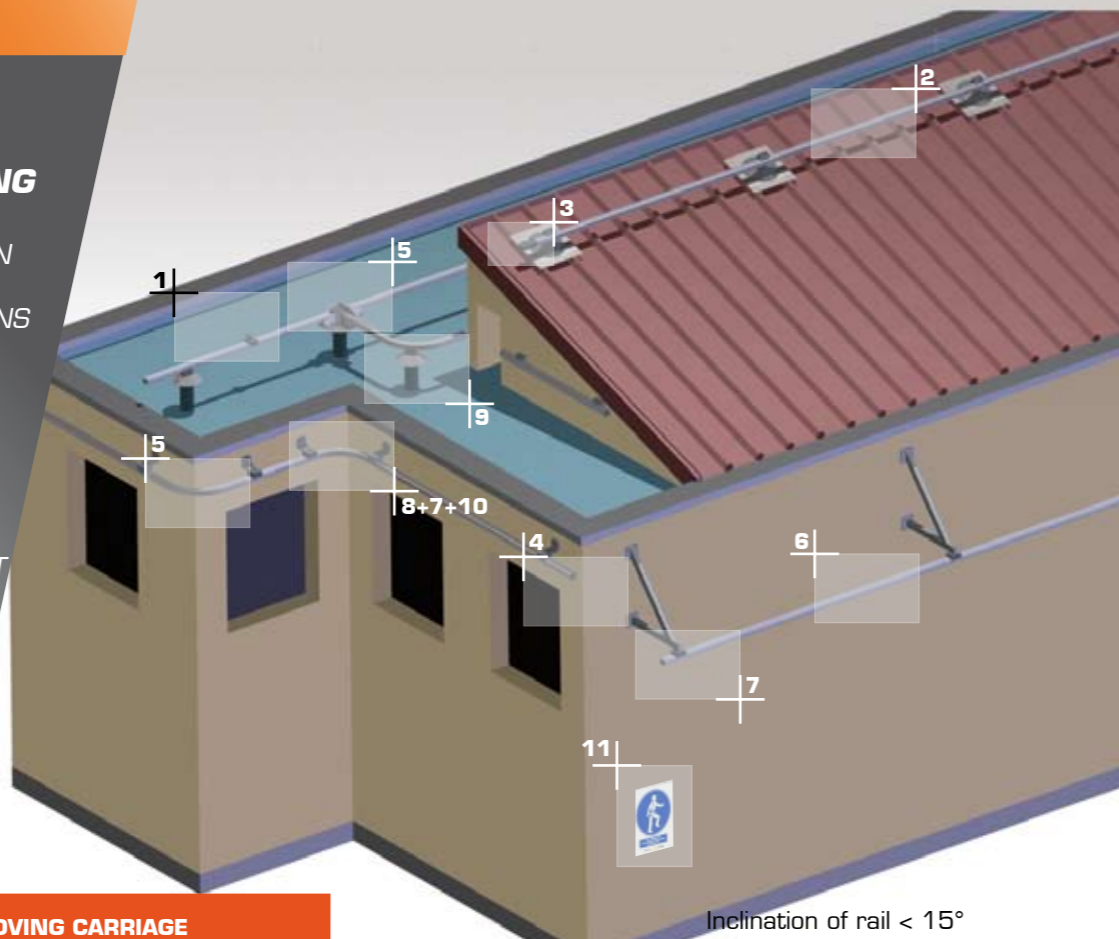
Owing to the rigidity of the system.

ABILITY TO WORK IN SUSPENSION

and the use of an PPE connection of significant weight (very long cable block).

CAN BE INSTALLED ON THE MAJORITY OF ROOFS

Owing to **ALTIFIX** suitable for the rail system.



Carriage

Ref. R.CF2

Enables simple movement, whatever the orientation of the rail.



Extruded aluminium 6060 Rail

Ref. R.RAIL3

Can be used as a handrail in any direction. Supplied in lengths of 3m.



Retractable end stop escamotable

Ref. R.BE

This end stop enables the carriage to be fitted at the end of the rail.



Fixed end stop

Ref. R.EXTF

The fixed end stop comprises an end piece for the rail and 2 elastomer end stops.



Rail coumpling block

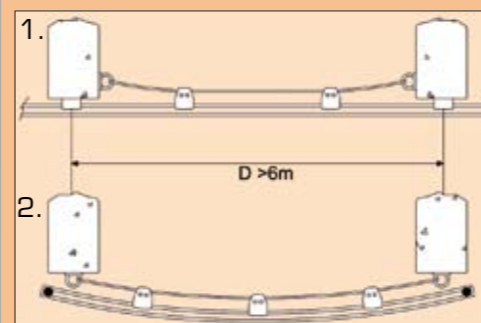
Ref. R.ECL

The comprises:
- 1 steel block: length 120 mm
- 8 FHC M8x14 screws (+1 additional screw).
- 4 pins fitted at the four corners of the rail section for perfect alignment.



ALTIRAIL® COMBINED CONFIGURATION

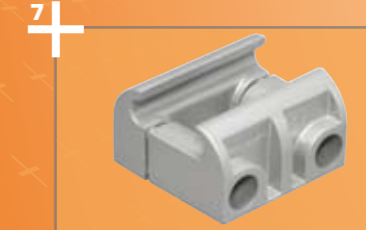
For special applications where there is no support available, the rail may be attached to a cable. This configuration has been certified for spans of up to 30m.



Switch

Ref. R.AIG3D
Ref. R.AIG4D

Provide continuity of movement. Available in two versions:
- 3 directions: **R.AIG3D**
- 4 directions: **R.AIG4D**



Open support in copper-aluminium

Ref. R.SUP

Facilitates fitting and removal of the rail. Also permits free expansion of the rail.



90° corner for lateral movement

- Ref. **R.A90E**: single curve corner.
- Ref. **R.A90S**: corner with triple curvature to pass round the projecting corner of a wall.



90° corners for movement on under surface

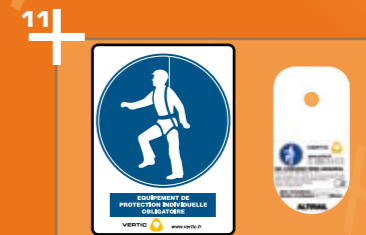
- Ref. **R.A90E2**: single curve corner.
- Ref. **R.A90S2**: corner with triple curvature to pass round the projecting corner of a wall.



Brackets

Ref. R.EQ-I
Ref. R.EQ-G

- For mounting on the facade, add galvanised steel bracket **R.EQ-G**.
- For lateral mounting on a post on the roof, add stainless steel bracket **R.EQ-I**.



Safety sign

Ref. R.PS

Comprises 2 parts:
- EPI Compulsory panel.
- identification label for anti-fall rail.

ALTIRAIL® OPTION



Special bend

Ref. R.ASPECIF

For constructing a rail suitable for the host structure.

Option available on request.